

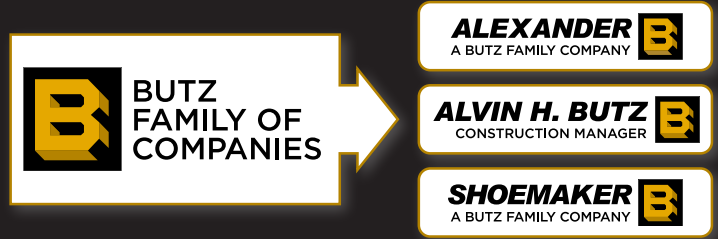


# BUTZ FAMILY OF COMPANIES

# HISTORY

The Butz family has a long, storied tradition of completing high-quality projects in the Lehigh Valley dating back to the mid-1800s, when the family constructed covered bridges. Alvin H. Butz, Inc. was the first to pioneer the Construction Management concept in the Lehigh Valley in 1973.

In 2003, two new construction management companies, Alexander Building Construction Co. and Shoemaker Construction Co., were formed and together as The Butz Family of Companies, we provide construction management services in Pennsylvania, New Jersey, New York, Delaware and Maryland.



ALVIN H. BUTZ, INC. has been continuously owned and operated in the Lehigh Valley by the Butz family, with the **6th generation** in line to preserve the tradition and reputation of the organization.

## MISSION

**THE BUTZ FAMILY OF COMPANIES** is dedicated to superior project delivery in an atmosphere of **teamwork** and open **communication** in all of our business relationships.

We will build on our tradition of **excellence** with an unwavering **commitment to quality** and **continuous improvement**.

We will always perform with **integrity, honesty, reliability, and enthusiasm**.

We will ensure **growth** opportunities for our employees and a continued commitment to our **community**.

**30+** consecutive years  
ENR Top 400 Contractors

3-YEAR AVERAGE VOLUME **\$1.02B**

**200+**  
EMPLOYEES

**10** ASHE HEALTHCARE CERTIFICATE HOLDERS

**12** LEED ACCREDITED PROFESSIONALS

## EXPERIENCE

10-YEAR  
**500+**  
PROJECTS  
**>\$4.0B**  
VOLUME

HEALTHCARE 37.71%	
COLLEGE 11.96%	K-12 11.45%
ENTER/REC 9.48%	RETAIL 7.55%
INDUST 7.26%	OFFICE 6.68%
OTHER <5%	

PERCENT OF VOLUME BY MARKET SEGMENT

### ALEXANDER

#### ALEXANDER BUILDING CONSTRUCTION CO.

*Harrisburg*  
315 Vaughn Street  
Harrisburg, PA 17110  
717-234-7041

*State College*  
2545 N. Atherton Street  
Suite 103  
State College, PA 16803  
814-237-6059

### ALVIN H. BUTZ

#### ALVIN H. BUTZ, INC.

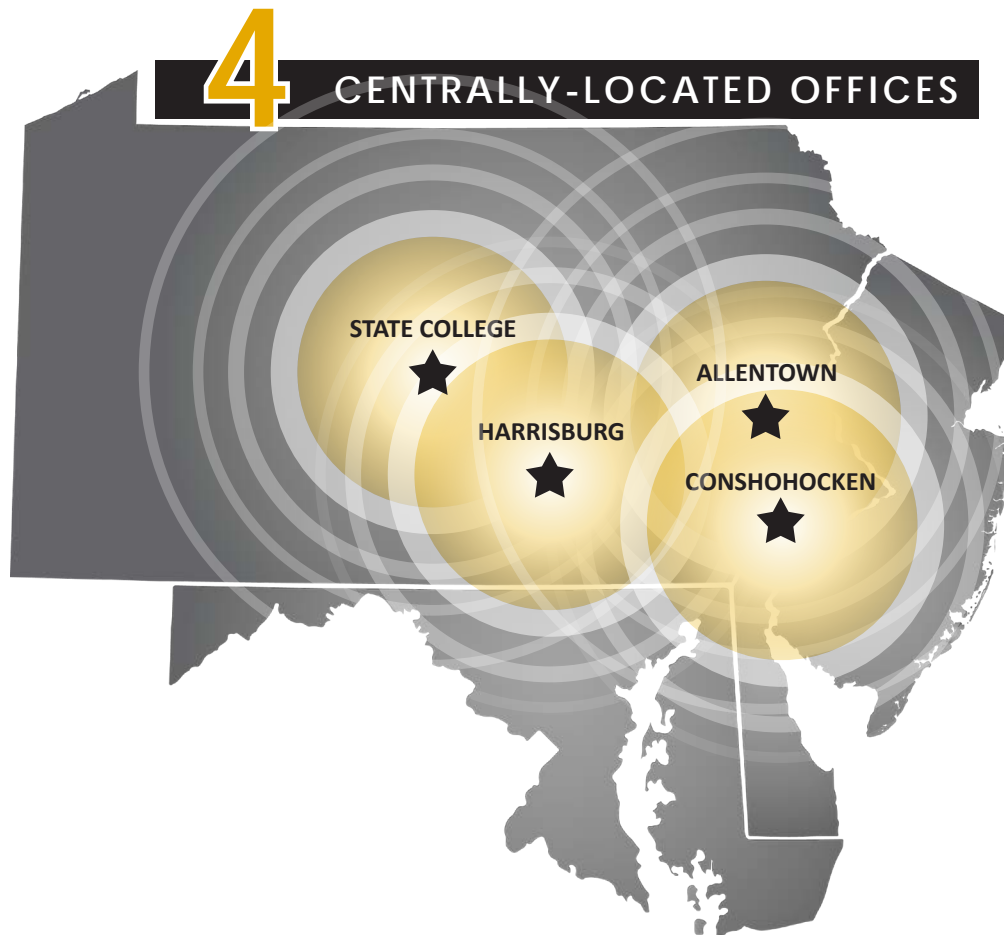
840 W. Hamilton Street  
Suite 600  
Allentown, PA 18101  
610-395-6871

### SHOEMAKER

#### SHOEMAKER CONSTRUCTION CO.

110 Washington Street  
Suite 530  
Conshohocken, PA 19428  
610-941-5500

butz.com



## SAFETY

OUR GOAL:

**ZERO**  
Personal Injury.

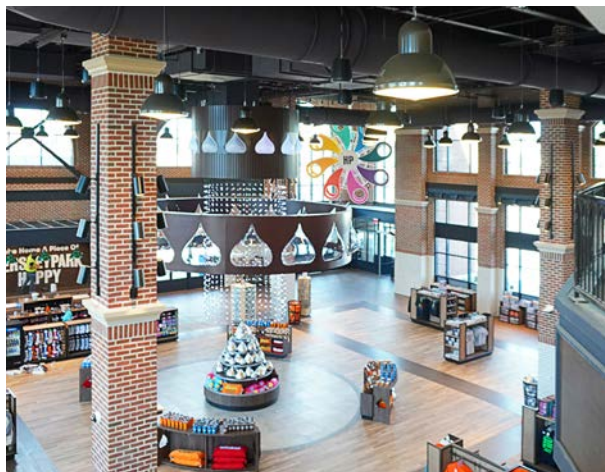
**ZERO**  
Property Damage.

2024 PA EMR  
**.627**





**BRIGADIER GENERAL ANNA MAE HAYS ELEMENTARY** \$41M  
ALLENTOWN SCHOOL DISTRICT 114,000 SF



**RESTAURANT & RETAIL** \$26M  
HERSHEY ENTERTAINMENT & RESORTS



**PAW CENTER ADDITION** \$16M  
PENN STATE DUBOIS 44,000 SF



**HAMPDEN MEDICAL CENTER** \$237M  
PENN STATE HEALTH 300,000 SF



**939 EXPANSION** \$146M  
B. BRAUN MEDICAL, INC. 310,000 SF



**MOUNT NITTANY MED. CENTER** \$9M  
W&C RENOVATIONS 23,885 SF



**OAK MARRIOTT BUILDING RENEW** \$6M  
PENN STATE 12,000 SF



**LANCASTER MEDICAL CENTER** \$286M  
PENN STATE HEALTH 400,000 SF



**SEVEN TOWER BRIDGE** \$65M  
OLIVER TYRONE PULVER CORP. 346,000 SF



**HAMILTON LANE ADVISORS** \$19M  
OFFICE FIT-OUT 84,638 SF



**PPL CENTER** \$251M  
ANIZDA 1,100,100 SF



**FASHION DISTRICT PHILADELPHIA** \$289M  
MACERICH/PREIT JOINT VENTURE 1,300,000 SF