



BUTZ FAMILY OF COMPANIES

HISTORY

The Butz family has a long, storied tradition of completing high-quality projects in the Lehigh Valley dating back to the mid-1800s, when the family constructed covered bridges. Alvin H. Butz, Inc. was the first to pioneer the Construction Management concept in the Lehigh Valley in 1973.

In 2003, two new construction management companies, Alexander Building Construction Co. and Shoemaker Construction Co., were formed and together as The Butz Family of Companies, we provide construction management services in Pennsylvania, New Jersey, New York, Delaware and Maryland.



MISSION

THE BUTZ FAMILY OF COMPANIES is dedicated to superior project delivery in an atmosphere of **teamwork** and open **communication** in all of our business relationships.

We will build on our tradition of **excellence** with an unwavering **commitment to quality** and **continuous improvement**.

We will always perform with **integrity, honesty, reliability, and enthusiasm**.

We will ensure **growth** opportunities for our employees and a continued commitment to our **community**.

30+ consecutive years
ENR Top 400 Contractors

3-YEAR AVERAGE VOLUME **\$1.02B**

200+
EMPLOYEES

10 ASHE HEALTHCARE
CERTIFICATE
HOLDERS

12 LEED
ACCREDITED
PROFESSIONALS

EXPERIENCE

10-YEAR
500+
PROJECTS
>\$4.0B
VOLUME

HEALTHCARE 37.71%	
COLLEGE 11.96%	K-12 11.45%
ENTER/REC 9.48%	RETAIL 7.55%
INDUST 7.26%	OFFICE 6.68%
OTHER <5%	

PERCENT OF VOLUME BY MARKET SEGMENT

ALEXANDER

ALEXANDER BUILDING CONSTRUCTION CO.

Harrisburg
315 Vaughn Street
Harrisburg, PA 17110
717-234-7041

State College
2545 N. Atherton Street
Suite 103
State College, PA 16803
814-237-6059

ALVIN H. BUTZ

ALVIN H. BUTZ, INC.

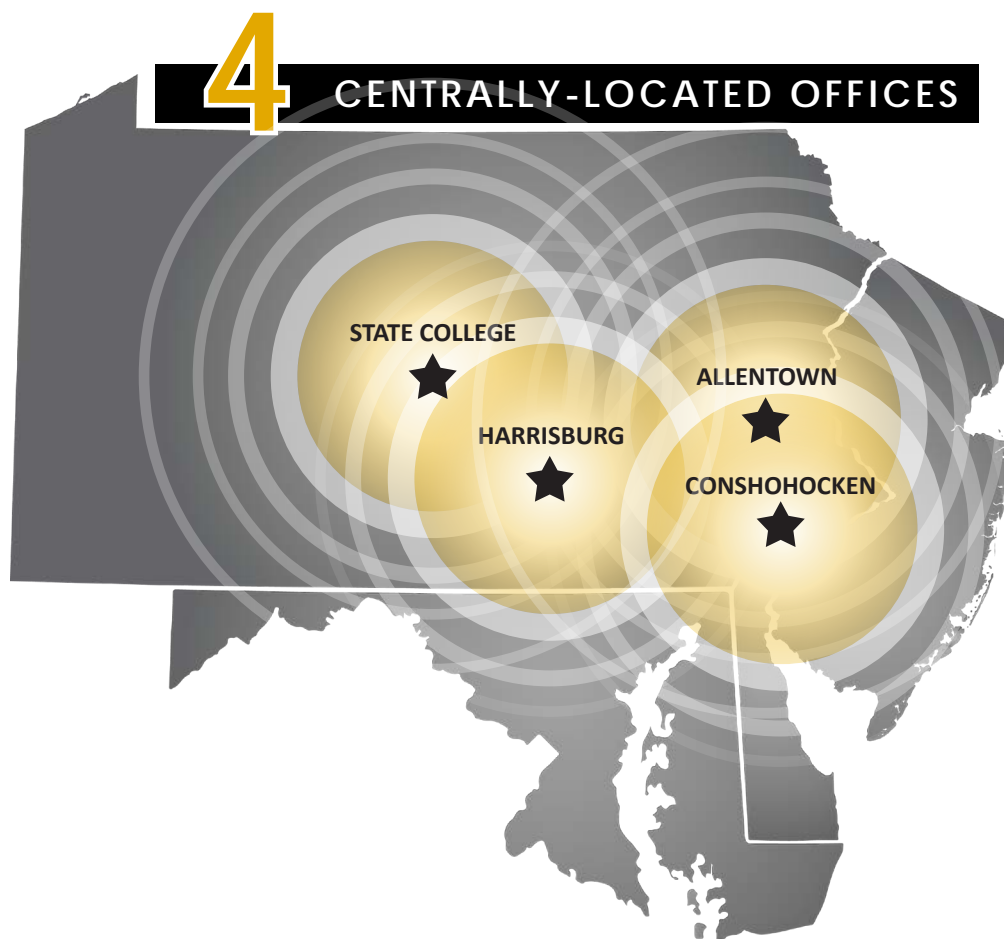
840 W. Hamilton Street
Suite 600
Allentown, PA 18101
610-395-6871

SHOEMAKER

SHOEMAKER CONSTRUCTION CO.

110 Washington Street
Suite 530
Conshohocken, PA 19428
610-941-5500

butz.com



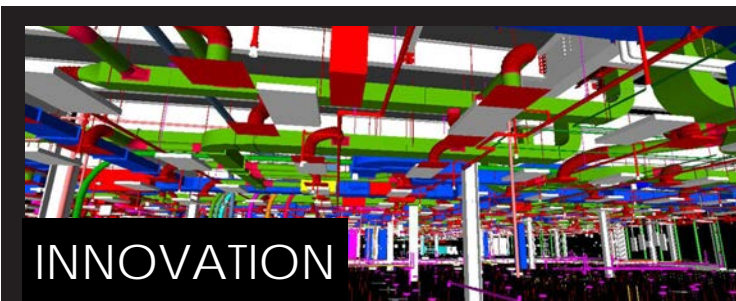
SAFETY

OUR GOAL:

ZERO
Personal Injury.

ZERO
Property Damage.

2024 PA EMR
.627



outpatient
facilities



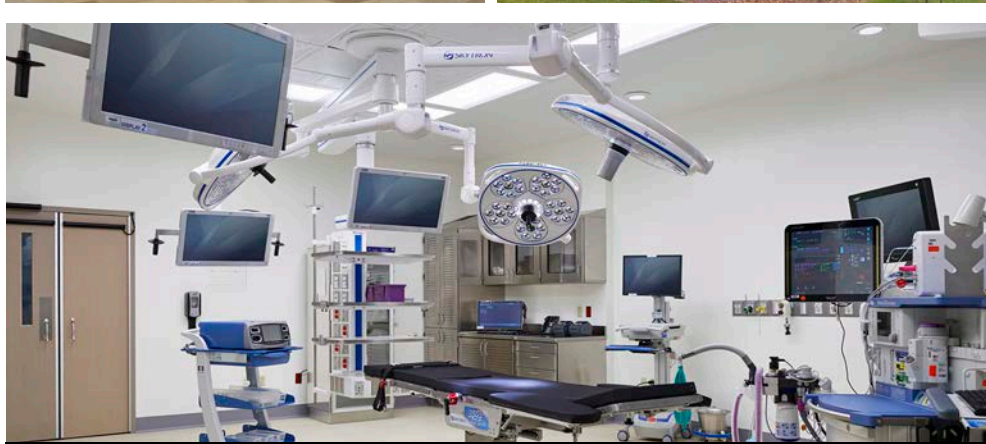
TOFTREES OUTPATIENT CENTER \$64.0M
MOUNT NITTANY HEALTH 125,000 SF



CHESTER COUNTY MOB
LANCASTER GENERAL HEALTH
\$10.5M 38,000 SF



**GRAY'S WOODS SURGERY
CENTER & PARKING DECK**
GEISINGER HEALTH SYSTEM
\$35.1M 163,960 SF



HEALTH AND SURGERY CENTER \$38.6M
WELLSPAN HEALTH 80,000 SF

inpatient
facilities



YORK CANCER CENTER EXPANSION \$42.9M
WELLSPAN HEALTH 102,187 SF



REILLY CHILDREN'S HOSPITAL \$13.3M
LEHIGH VALLEY HEALTH NETWORK 31,895 SF



WILLIAMSPORT RMC OR EXPANSION \$10.3M
UPMC SUSQUEHANNA 25,000 SF

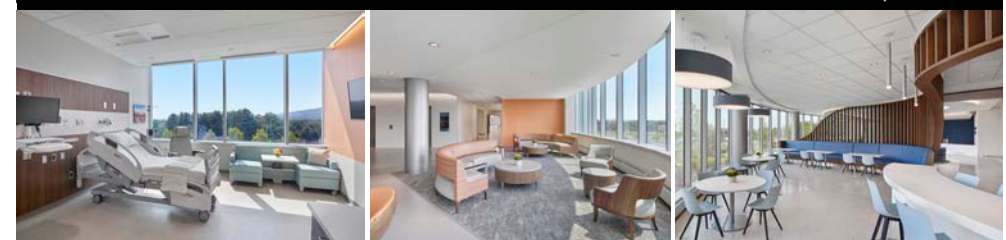
large
projects



LANCASTER MEDICAL CENTER \$285.9M
PENN STATE HEALTH 400,000 SF



HAMPDEN MEDICAL CENTER \$237.4M
PENN STATE HEALTH 300,000 SF



PENN HIGHLANDS STATE COLLEGE \$76.1M
PENN HIGHLANDS HEALTHCARE 111,444 SF